

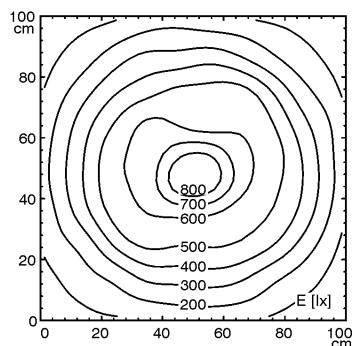
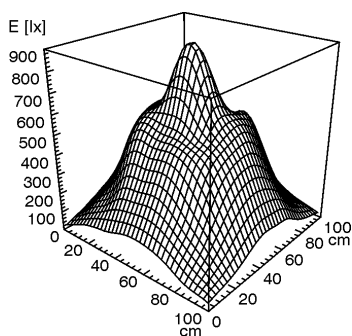
## LED machine luminaire



**FLAT LED - MYAL 6 S**

connected load	10-40 V; DC
fitted with	6 x LED-Emitter LED 3.8 W
work equipment	without
mains lead	approx. 3.0 m (9.8 ft); with free stranded wires
design	6 S
luminaire body	
material	aluminium
surface	anodized
weight (net)	approx. 1,0 kg (2.2 lbs)
fastening	screws
technology	switchable
usage	without switch
lamp cover	glass screen
glare-free	without
system of protection	IP 67
class of protection	III
article no.	112560000

E<sub>min</sub>: 49 lx  
 E<sub>m</sub>: 347 lx  
 E<sub>max</sub>: 869 lx



measuring conditions: d=50cm